



# Data Logger LogBox-RHT-LCD



## Introduction

**LogBox-RHT-LCD** is a 2-channel data logger with sensors for temperature and humidity integrated. Use high-quality sensor, for accurate and reliable transportation applications, storage of perishables, audit processes, among others. The **LogChart II** enables configuring, collecting, plotting, analysis and export records. The sensor measurement values are shown on the display. You can also check the display, the minimum and maximum values occurred during acquisitions.

In the model **LogBox-RHT-LCD**, the sensor measurement values are shown on the display. You can also check the display, the minimum and maximum values occurred during acquisitions.

## Specifications

- Temperature measurement:
  - Range: -40 to 80 °C. Resolution: 0.1 °C
  - Response time: up to 30 s in fairly still air
- Humidity measurement:
  - RH Range: 0 to 100 %RH. Resolution: 0.1 %RH
  - Dew point range: -40 ° to 100 °C. Resolution 0.1 °C
  - Response time: 8s in fairly still air, from 20 to 80 %RH
- Accuracy: See figure
- Memory for 32000 recordings in one channel or 16000 recordings for each channel
- Recording interval: programmable from 1 s to 18 hours
- Logger start: immediately, outset by the device's button, by date/hour or by a programmed set point
- Logger stop: at full memory; at some specified date and hour, number of samples or never stop (circular memory)
- Infrared communication range: 50 cm, 30° angle

- Internal replaceable lithium cell (3.6 V 1/2 AA)
- Estimated battery life: up to 200 days with one weekly download and 5 minutes measuring interval. Battery life depends heavily on data retrieval frequency
- Configuration and data retrieval software for Windows® XP, Vista and 7.
- Operating temperature: -40°C to 70°C
- Enclosure: IP65 (electronics), IP40 (sensor probe), flame retardant, ABS + PC
- Dimensions: 70 x 60 x 35 mm

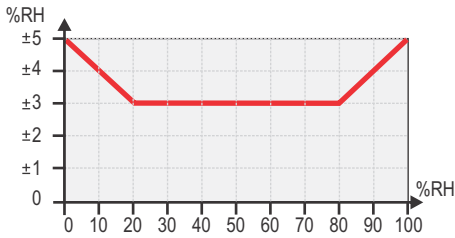
## Configuration

- **LogChart II** software allows the setting, collecting, plotting, analysis and data export.
- Infrared communication with PC is done using the communication interface IrLink3 connected to the USB port.
- Once transferred to your computer, data can be viewed and exported using **LogChart II**.

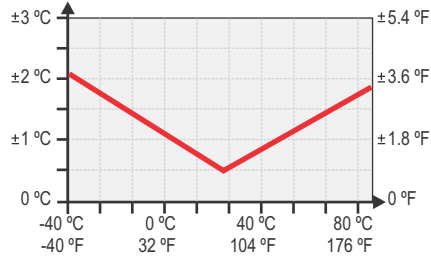
# Accuracy and Operational Limits



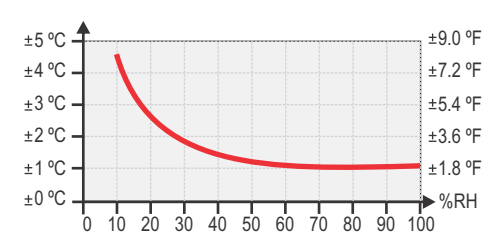
Relative Humidity Accuracy @25°C



Temperature Accuracy

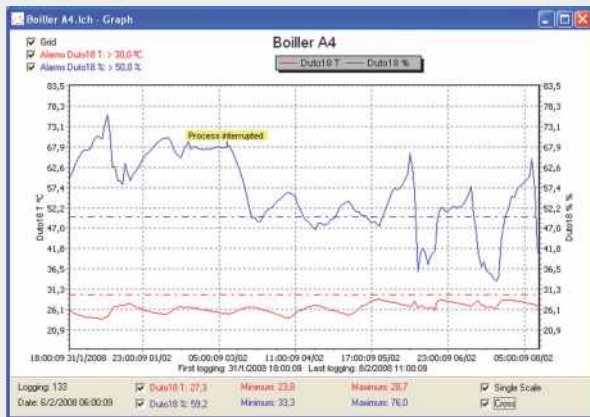


Dew Point Accuracy @25°C



The RH sensor used in the equipment may be damaged or descalibrated when exposed to contaminated atmospheres or chemical agents. Hydrochloric, nitrous or sulphuric acid or ammonia in high concentrations may damage the sensor. Acetone, ethanol and propylene glycol may cause reversible measuring errors.

# Data Analysis



Graph

Tag	Value	Alarm	Date/Time
00001	100.000	17/1/2008	08.1
00002	100.000	17/1/2008	08.2
00003	100.000	17/1/2008	08.3
00004	21.800	21/1/2008	04.9
00005	12.000	29/1/2008	24.7
00006	22.000	27/1/2008	20.8
00007	60.000	15/2/008	24.4
00008	55.000	15/2/008	24.2
00009	82.000	15/2/008	24.2
00010	55.000	15/2/008	24.1
00011	64.000	15/2/008	24.0
00012	60.000	15/2/008	23.9
00013	55.000	15/2/008	23.8
00014	57.000	15/2/008	23.8
00015	60.000	15/2/008	23.8
00016	60.000	15/2/008	23.8
00017	50.000	15/2/008	23.3
00018	11.000	15/2/008	23.3
00019	55.000	15/2/008	23.3
00020	15.000	15/2/008	23.2
00021	14.000	15/2/008	23.2
00022	16.000	15/2/008	23.2
00023	16.000	15/2/008	23.2
00024	17.000	15/2/008	23.1
00025	16.000	15/2/008	23.1
00026	16.000	15/2/008	23.1
00027	16.000	15/2/008	23.1
00028	21.000	15/2/008	23.1
00029	22.000	15/2/008	23.1
00030	23.000	15/2/008	23.1
00031	60.000	20/2/008	20.9
00032	61.000	20/2/008	20.8

Configuration

Table

# Model



LogBox-RHT-LCD

# Dimension

